



North Central District Health Department

Protecting Henry, Shelby, Spencer, and Trimble Counties
1020 Henry Clay Street, Shelbyville, KY 40065
(502) 633-1243 www.ncdhd.com

For Immediate release

April 2, 2021

Contact: Tony Millet R.S, Environmental Supervisor/Public Information Officer

Tel: (502) 221-1795 | tonyl.millet@ky.gov

North Central District Health Department regretfully is announcing four new deaths; two in Henry County, one in Shelby County, and one in Spencer County due to complications from the Novel Coronavirus (COVID-19). Eighty new lab-confirmed cases in Shelby, Henry, Spencer, and Trimble Counties, increasing the district case count to 7,960. Eighty-four individuals monitored by North Central District have been released from isolation.

Shelby County, KY – Henry County has had two COVID-19 related deaths, both in elderly Caucasian females with underlying conditions; our hearts and prayers go out to their family and friends.

Shelby County has had another COVID-19 related death in an elderly Caucasian male with underlying conditions; our hearts and prayers go out to his family and friends.

Spencer County has had another COVID-19 related death in an elderly Caucasian male with underlying conditions; our hearts and prayers go out to his family and friends.

North Central District Health Department has eighty cases that tested positive for the Novel Coronavirus (COVID-19).

- **Shelby County = 42**
 - 10 adult Caucasian females in self-isolation at home.
 - 19 adult Caucasian males in self-isolation at home.
 - 2 pediatric Caucasian females in self-isolation at home.
 - 1 pediatric Caucasian male in self-isolation at home.
 - 2 adult Hispanic females in self-isolation at home.
 - 4 adult Hispanic males in self-isolation at home.
 - 1 elderly Hispanic male in self-isolation at home.
 - 1 adult African American female in self-isolation at home.
 - 2 adult African American males in self-isolation at home.
- **Spencer County= 15**
 - 4 adult Caucasian females in self-isolation at home.
 - 5 adult Caucasian males in self-isolation at home.
 - 2 elderly Caucasian females in self-isolation at home.
 - 3 pediatric Caucasian females in self-isolation at home.
 - 1 adult Hispanic female in self-isolation at home.
- **Henry County= 13**
 - 3 adult Caucasian females in self-isolation at home.
 - 4 adult Caucasian males in self-isolation at home.
 - 1 elderly Caucasian female in self-isolation at home.
 - 2 elderly Caucasian males under medical care.




North Central District Health Department

Protecting Henry, Shelby, Spencer, and Trimble Counties
 1020 Henry Clay Street, Shelbyville, KY 40065
 (502) 633-1243 www.ncdhd.com

- 2 pediatric Caucasian females in self-isolation at home.
- 1 adult Asian female in self-isolation at home.
- **Trimble County= 10**
 - 2 adult Caucasian females in self-isolation at home.
 - 6 adult Caucasian males in self-isolation at home.
 - 2 pediatric Caucasian males in self-isolation at home.

North Central District released eighty-four individuals from isolation; fifty-two from Shelby County, twelve from Spencer County, ten from Henry County and ten from Trimble County monitored their symptoms and complied with a self-isolation agreement with the Health Department.

North Central District Health Department 

COVID-19 Summary as of 4/2/2021

7960

Positive Cases

116	7745	99
Active Cases	Recovered Cases	Deaths

	Henry	Shelby	Spencer	Trimble
Total Cases	1194	4521	1565	680
Active Cases	29	41	28	18
Released Cases	1153	4416	1520	656
Deaths	12	64	17	6

Positive test results by ethnicity		
Hispanic	832	10.5%
African American	392	4.9%
Caucasian	6681	83.9%
Asian	36	0.5%
Other	19	0.2%

“North Central District Health Department will be expanding vaccinations clinics to include 1a, 1b, all of phase 1c (must be age 18 and older who have underlying medical conditions see link below) and phase 2 that includes anyone 40 and older for vaccination clinics. Go to our website www.NCDHD.com to schedule your appointment. For questions or assistance with the electronic scheduler call the COVID Hotline at 502-390-2600. Click on the link to see a list of conditions that are covered in this phase expansion https://www.ncdhd.com/covid_vaccine.”, Roanya Rice, Public Health Director of NCDHD.

*Numbers are reported by zip code which may cause some number movement between counties.

*Some data in this report has been reconciled with the State of Kentucky’s death report review.

For additional information please contact Tony Millet at (502) 221-1795 or www.ncdhd.com



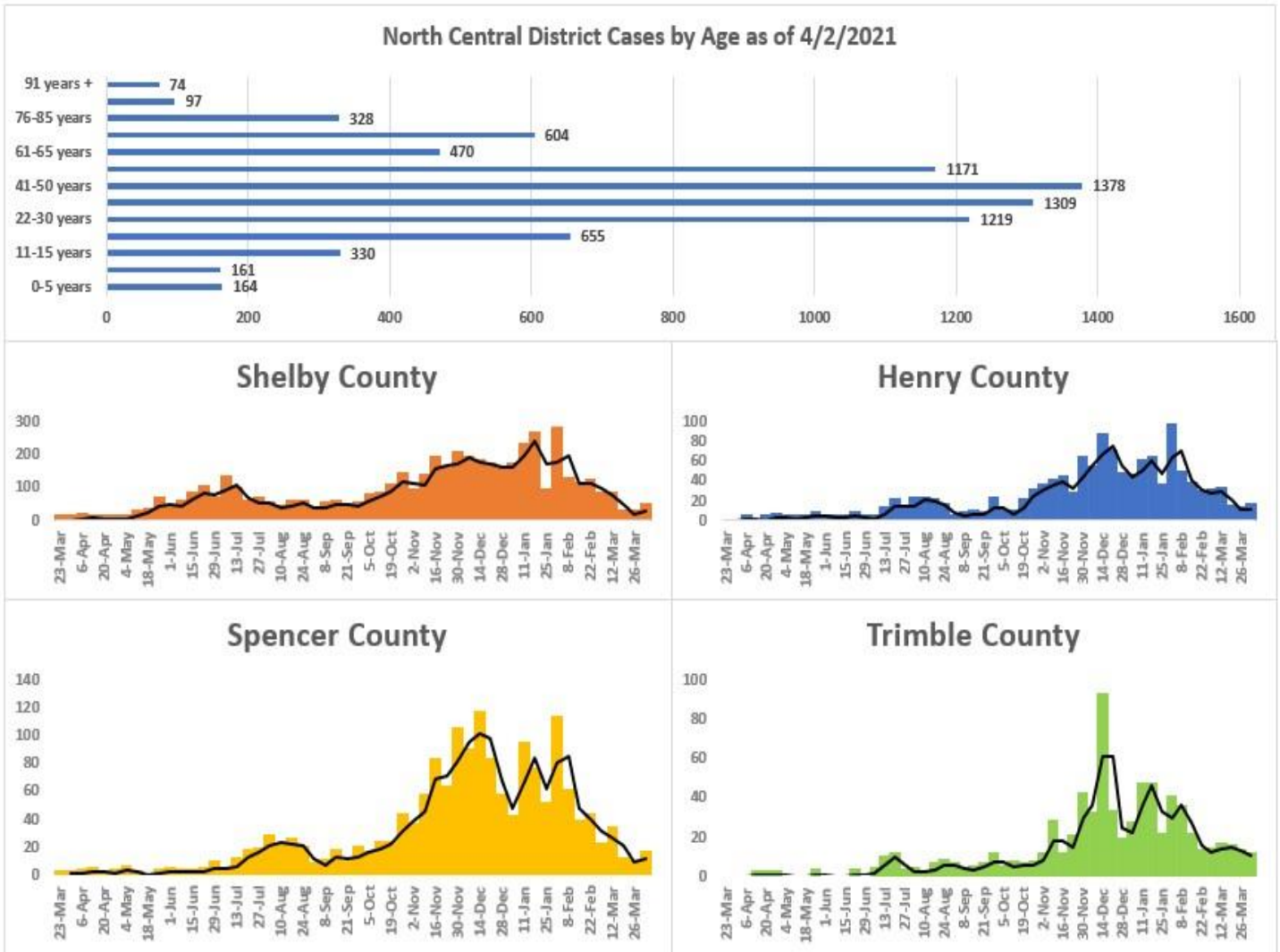
North Central District Health Department

Protecting Henry, Shelby, Spencer, and Trimble Counties

1020 Henry Clay Street, Shelbyville, KY 40065

(502) 633-1243

www.ncdhd.com



###