



North Central District Health Department

Protecting Henry, Shelby, Spencer, and Trimble Counties
1020 Henry Clay Street, Shelbyville, KY 40065
(502) 633-1243 www.ncdhd.com

For Immediate release

December 2, 2020

Contact: Tony Millet R.S, Environmental Supervisor/Public Information Officer

Tel: (502) 221-1795 | tonyl.millet@ky.gov

North Central District Health Department regrettably announces four deaths, two from Shelby County, one from Henry County, and one from Spencer County due to complications from the Novel Coronavirus (COVID-19). Ninety-five new lab-confirmed cases in Shelby, Henry, Trimble, and Spencer Counties, increasing the district case count to 3656. One hundred-seven individuals monitored by North Central District have been released from isolation.

Shelby County, KY – Shelby County has had another COVID-19 related death in an adult Caucasian male with pre-existing underlying conditions; our hearts and prayers go out to his family and friends.

Shelby County has had another COVID-19 related death in an adult Caucasian female with pre-existing underlying conditions; our hearts and prayers go out to her family and friends.

Henry County has had another COVID-19 related death in an elderly Caucasian female with pre-existing underlying conditions; our hearts and prayers go out to her family and friends.

Spencer County has had another COVID-19 related death in an elderly Caucasian female with pre-existing underlying conditions; our hearts and prayers go out to her family and friends.

North Central District Health Department has ninety-five cases that tested positive for the Novel Coronavirus (COVID-19).

- **Shelby County = 49**
 - 14 adult Caucasian females in self-isolation at home.
 - 16 adult Caucasian males in self-isolation at home.
 - 3 elderly Caucasian females in self-isolation at home.
 - 1 elderly Caucasian male in self-isolation at home.
 - 7 pediatric Caucasian females in self-isolation at home.
 - 2 pediatric Caucasian males in self-isolation at home.
 - 1 adult Hispanic male in self-isolation at home.
 - 1 adult Hispanic female in self-isolation at home.
 - 1 pediatric Hispanic female in self-isolation at home.
 - 1 pediatric Hispanic male in self-isolation at home.
 - 1 adult African American female in self-isolation at home.
 - 1 adult African American male in self-isolation at home.
- **Henry County= 8**
 - 3 adult Caucasian females in self-isolation at home.
 - 2 adult Caucasian males in self-isolation at home.
 - 1 adult Caucasian male under medical care.
 - 1 pediatric Caucasian female in self-isolation at home.
 - 1 pediatric Caucasian male in self-isolation at home.



North Central District Health Department

Protecting Henry, Shelby, Spencer, and Trimble Counties
 1020 Henry Clay Street, Shelbyville, KY 40065
 (502) 633-1243 www.ncdhd.com

- **Spencer County= 35**
 - 9 adult Caucasian females in self-isolation at home.
 - 6 adult Caucasian males in self-isolation at home.
 - 4 elderly Caucasian males in self-isolation at home.
 - 12 elderly Caucasian females in self-isolation at home.
 - 1 pediatric Caucasian male in self-isolation at home.
 - 1 pediatric Caucasian female in self-isolation at home.
 - 1 adult African American male in self-isolation at home.
 - 1 adult African American female in self-isolation at home.

- **Trimble County= 3**
 - 2 adult Caucasian females in self-isolation at home.
 - 1 adult Caucasian male in self-isolation at home.

North Central District released one hundred-seven individuals from isolation; twenty-five from Shelby County, sixty-three from Spencer County, eighteen from Trimble County, and one from Henry County monitored their symptoms and complied with a self-isolation agreement with the Health Department.

“The graphs below illustrate that we are in a period of exponential growth in our counties. In November, we more than doubled the number of Covid-19 cases that occurred in our counties from October’s cases. If this trajectory continues, we could reach nearly 10,000 cases in the District by the month-end of February. The result of inaction from the community will overwhelm the healthcare system, continued economic hardship for our communities, and more deaths among our friends and families. Now is the time that we must take action to prevent this grim outlook by avoiding family gatherings, including small groups, diligently wearing face coverings, proper handwashing, and maintain social distancing.”, said Roanya Rice, Public Health Director of NCDHD.

North Central District Health Department
COVID-19 Summary as of 12/2/2020



3656

Positive Cases

346	3264	46
Active Cases	Recovered Cases	Deaths

*Numbers are reported by zip code which may cause some number movement between counties.

For additional information please contact Tony Millet at (502) 221-1795 or www.ncdhd.com

	Henry	Shelby	Spencer	Trimble
Total Cases	458	2305	689	204
Active Cases	52	166	90	38
Released Cases	400	2105	594	165
Deaths	6	34	5	1

Positive test results by ethnicity		
Hispanic	582	15.9%
African American	194	5.3%
Caucasian	2862	78.3%
Asian	13	0.4%
Other	5	0.1%



North Central District Health Department

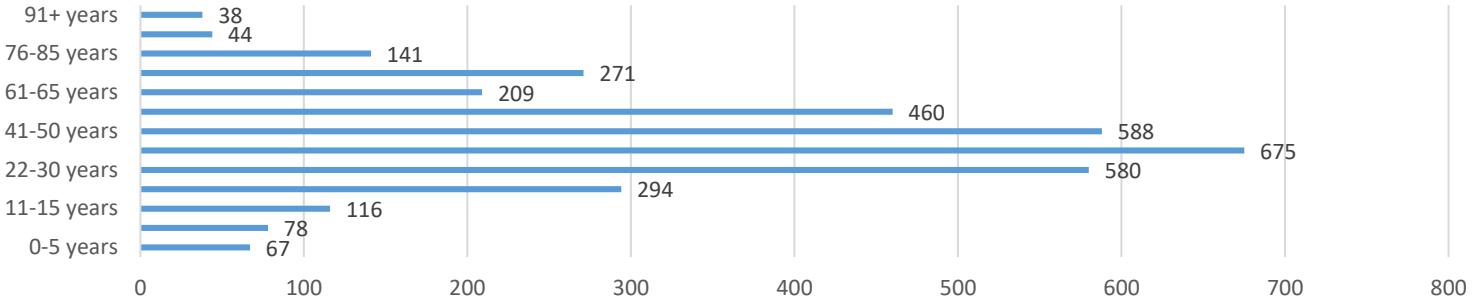
Protecting Henry, Shelby, Spencer, and Trimble Counties

1020 Henry Clay Street, Shelbyville, KY 40065

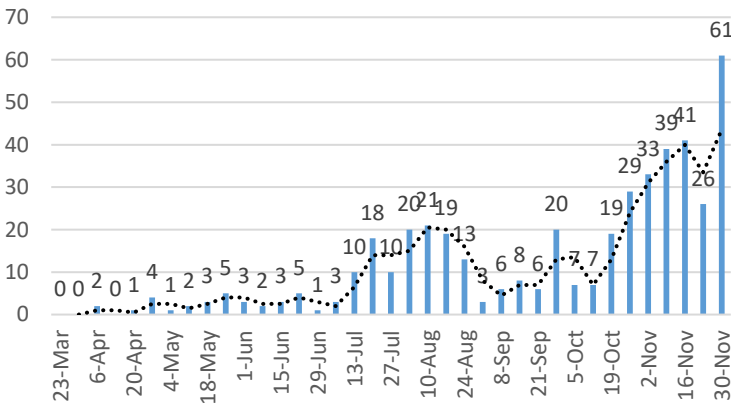
(502) 633-1243

www.ncdhd.com

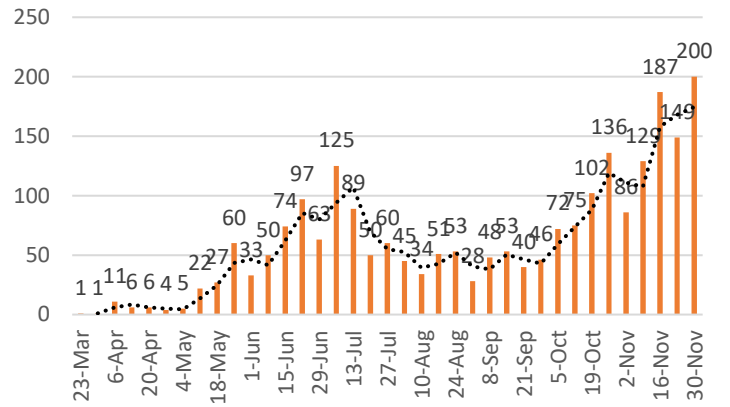
North Central District Cases by Age as of 11/23/2020



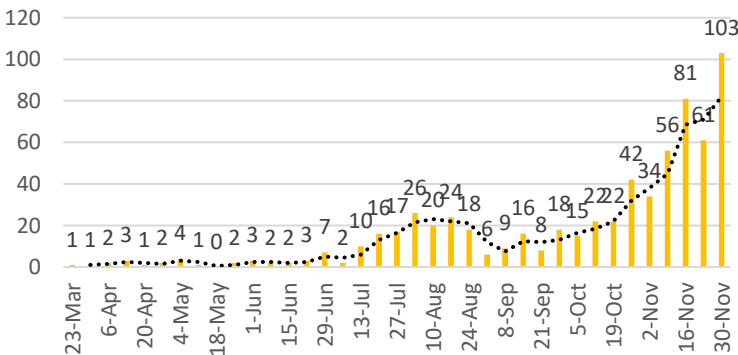
Henry County Cases by Week



Shelby County Cases by Week



Spencer County Cases by Week



Trimble County Cases by Week

