



North Central District Health Department

Protecting Henry, Shelby, Spencer, and Trimble Counties
1020 Henry Clay Street, Shelbyville, KY 40065
(502) 633-1243 www.ncdhd.com

For Immediate release

December 21, 2020

Contact: Tony Millet R.S, Environmental Supervisor/Public Information Officer

Tel: (502) 221-1795 | tonyl.millet@ky.gov

North Central District Health Department regretfully announces a new death from Trimble County due to complications from the Novel Coronavirus (COVID-19). One hundred-twenty new lab-confirmed cases in Shelby, Henry, Trimble, and Spencer Counties, increasing the district case count to 4726. One hundred-eighty-two individuals monitored by North Central District have been released from isolation.

Shelby County, KY – Trimble County has had another COVID-19 related death in an elderly Asian male with pre-existing underlying conditions; our hearts and prayers go out to his family and friends.

North Central District Health Department has one hundred-twenty cases that tested positive for the Novel Coronavirus (COVID-19).

- **Shelby County = 43**
 - 16 adult Caucasian females in self-isolation at home.
 - 8 adult Caucasian males in self-isolation at home.
 - 2 elderly Caucasian females in self-isolation at home.
 - 4 elderly Caucasian males in self-isolation at home.
 - 1 elderly Caucasian male under medical care.
 - 1 pediatric Caucasian female in self-isolation at home.
 - 3 pediatric Caucasian males in self-isolation at home.
 - 1 adult African American female in self-isolation at home.
 - 5 adult Hispanic males in self-isolation at home.
 - 1 elderly Hispanic male in self-isolation at home.
 - 1 adult Asian male in self-isolation at home.

- **Henry County= 28**
 - 10 adult Caucasian females in self-isolation at home.
 - 6 adult Caucasian males in self-isolation at home.
 - 2 elderly Caucasian females in self-isolation at home.
 - 3 elderly Caucasian males in self-isolation at home.
 - 3 pediatric Caucasian females in self-isolation at home.
 - 1 pediatric Caucasian male in self-isolation at home.
 - 1 elderly Caucasians male under medical care.
 - 1 pediatric Hispanic female in self-isolation at home.
 - 1 adult African American male in self-isolation at home.

- **Spencer County= 32**
 - 8 adult Caucasian females in self-isolation at home.
 - 16 adult Caucasian males in self-isolation at home.
 - 2 elderly Caucasian females in self-isolation at home.



North Central District Health Department

Protecting Henry, Shelby, Spencer, and Trimble Counties
 1020 Henry Clay Street, Shelbyville, KY 40065
 (502) 633-1243 www.ncdhd.com

- 1 pediatric Caucasian female in self-isolation at home.
- 2 pediatric Caucasian males in self-isolation at home.
- 1 adult Hispanic female in self-isolation at home.
- 1 pediatric Hispanic female in self-isolation at home.
- 1 adult American Indian male in self-isolation at home.
- **Trimble County= 17**
 - 7 adult Caucasian females in self-isolation at home.
 - 2 adult Caucasian males in self-isolation at home.
 - 3 elderly Caucasian females in self-isolation at home.
 - 2 elderly Caucasian males in self-isolation at home.
 - 2 pediatric Caucasian males in self-isolation at home.
 - 1 elderly Asian male under medical care.

North Central District released one hundred-eight-two individuals from isolation; sixty-four from Shelby County, fifty-three from Spencer County, forty-four from Henry County and twenty-one from Trimble County monitored their symptoms and complied with a self-isolation agreement with the Health Department.

North Central District Health Department
COVID-19 Summary as of 12/21/2020



4726

Positive Cases

435	4237	54
Active Cases	Recovered Cases	Deaths

	Henry	Shelby	Spencer	Trimble
Total Cases	653	2780	938	355
Active Cases	90	170	104	71
Released Cases	556	2574	827	280
Deaths	7	36	7	4

Positive test results by ethnicity	
Hispanic	627 13.3%
African American	254 5.4%
Caucasian	3816 80.7%
Asian	21 0.4%
Other	8 0.2%

“With the renewed public's effort to fight this virus and protect fellow citizens, the COVID-19 case numbers show we are in a plateau and decrease to the cases from the previous weeks. During the coming holidays, please continue these efforts by wearing masks, maintaining social distance, wash hands, avoid group gatherings, and reduce travel particularly out of state, until the vaccine is widely distributed to our communities.”, said Roanya Rice, Public Health Director of NCDHD.

*Numbers are reported by zip code which may cause some number movement between counties.

For additional information please contact Tony Millet at

(502) 221-1795 or www.ncdhd.com



North Central District Health Department

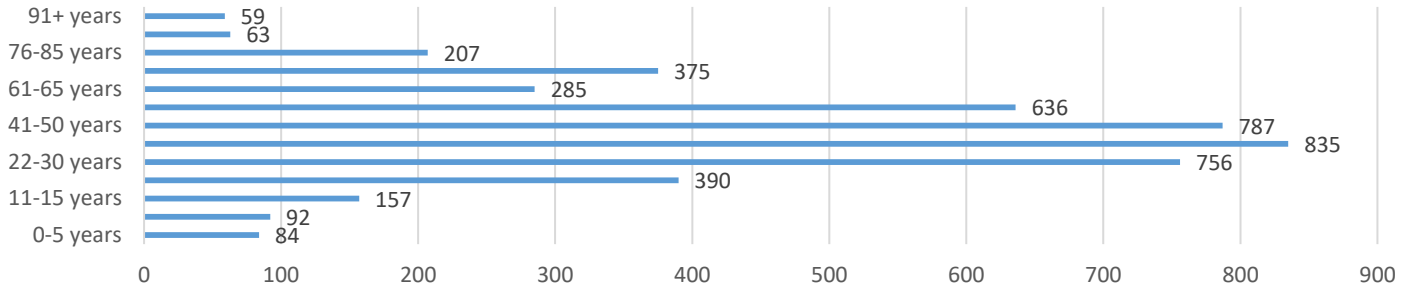
Protecting Henry, Shelby, Spencer, and Trimble Counties

1020 Henry Clay Street, Shelbyville, KY 40065

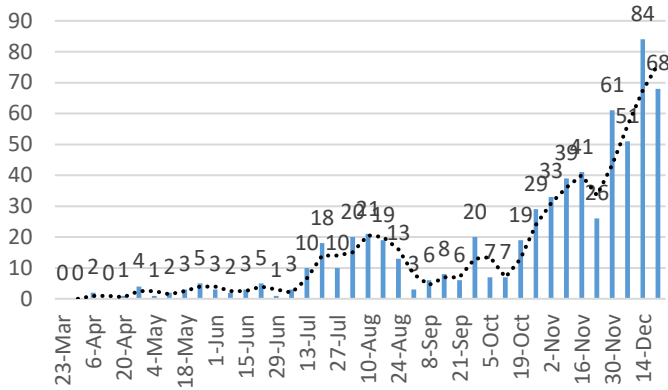
(502) 633-1243

www.ncdhd.com

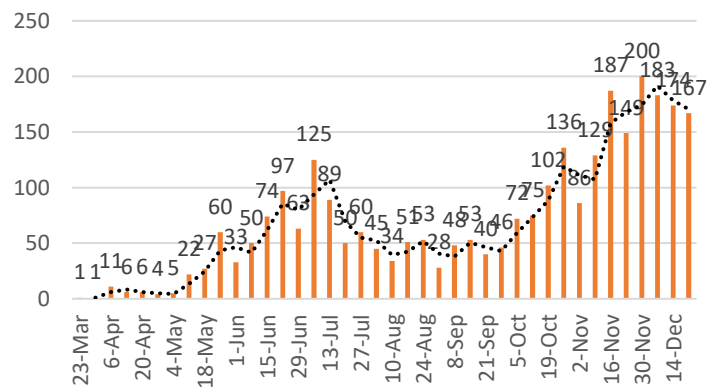
North Central District Cases by Age as of 12/21/2020



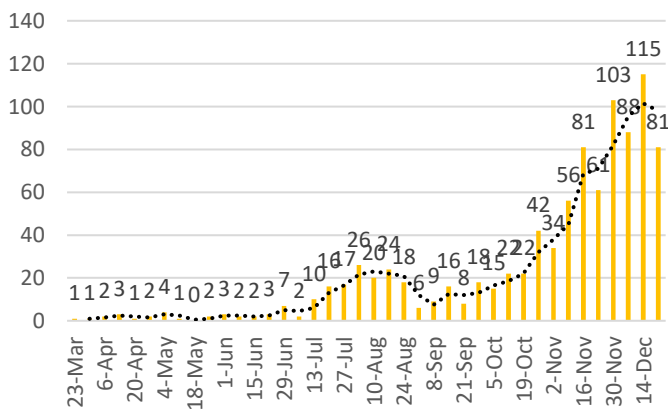
Henry County Cases by Week



Shelby County Cases by Week



Spencer County Cases by Week



Trimble County Cases by Week

