



# North Central District Health Department

Protecting Henry, Shelby, Spencer, and Trimble Counties  
1020 Henry Clay Street, Shelbyville, KY 40065  
(502) 633-1243 [www.ncdhd.com](http://www.ncdhd.com)

For Immediate release

March 19, 2021

Contact: Tony Millet R.S, Environmental Supervisor/Public Information Officer

Tel: (502) 221-1795 | [tonyl.millet@ky.gov](mailto:tonyl.millet@ky.gov)

**North Central District Health Department is reporting fifty-six new lab-confirmed cases in Shelby, Henry, Spencer, and Trimble Counties, increasing the district case count to 7,829. Sixty individuals monitored by North Central District have been released from isolation.**

**Shelby County, KY** – North Central District Health Department has fifty-six cases that tested positive for the Novel Coronavirus (COVID-19).

**\*Note:** North Central District Health Department is only publishing a press release on Fridays, so the numbers displayed today is from 3/13/2021 to 3/19/2021.

- **Shelby County = 20**
  - 6 adult Caucasian females in self-isolation at home.
  - 6 adult Caucasian males in self-isolation at home.
  - 1 elderly Caucasian male in self-isolation at home.
  - 1 elderly Caucasian male under medical care.
  - 3 pediatric Caucasian males in self-isolation at home.
  - 2 adult Hispanic females in self-isolation at home.
  - 1 elderly African American male in self-isolation at home.
- **Spencer County= 10**
  - 4 adult Caucasian females in self-isolation at home.
  - 1 adult Caucasian male in self-isolation at home.
  - 4 elderly Caucasian males in self-isolation at home.
  - 1 pediatric Caucasian female in self-isolation at home.
- **Henry County= 12**
  - 3 adult Caucasian females in self-isolation at home.
  - 3 adult Caucasian males in self-isolation at home.
  - 1 elderly Caucasian female in self-isolation at home.
  - 1 elderly Caucasian male in self-isolation at home.
  - 1 pediatric Caucasian male in self-isolation at home.
  - 2 adult African American females in self-isolation at home.
  - 1 pediatric African American female in self-isolation at home.
- **Trimble County= 14**
  - 4 adult Caucasian females in self-isolation at home.
  - 4 adult Caucasian males in self-isolation at home.
  - 4 elderly Caucasian females in self-isolation at home.
  - 1 pediatric Caucasian female in self-isolation at home.
  - 1 pediatric Caucasian male in self-isolation at home.



# North Central District Health Department

Protecting Henry, Shelby, Spencer, and Trimble Counties  
 1020 Henry Clay Street, Shelbyville, KY 40065  
 (502) 633-1243 [www.ncdhd.com](http://www.ncdhd.com)

North Central District released sixty individuals from isolation; twenty-four from Shelby County, eleven from Spencer County, thirteen from Henry County and twelve from Trimble County monitored their symptoms and complied with a self-isolation agreement with the Health Department.

## North Central District Health Department



COVID-19 Summary as of 3/19/2021

# 7829

Positive Cases

<b>136</b>	<b>7600</b>	<b>93</b>
Active Cases	Recovered Cases	Deaths

	Henry	Shelby	Spencer	Trimble
Total Cases	1170	4459	1542	658
Active Cases	25	65	25	21
Released Cases	1135	4333	1501	631
Deaths	10	61	16	6

Positive test results by ethnicity		
Hispanic	824	10.5%
African American	387	4.9%
Caucasian	6564	83.8%
Asian	35	0.4%
Other	19	0.2%

*“With the increase in vaccination sites and having over 900,000 Kentuckians with at least the first dose of the Covid vaccine; we should begin to discuss the next steps for the road back to normal life. North Central District Health Department recommends that everyone proceed slowly and closely follow CDC and Kentucky Department for Public Health recommendations and guidelines to achieve our goal of reducing the incidence of Covid-19. An individual that has been fully vaccinated can visit other fully vaccinated people and unvaccinated people from a single household indoors without wearing masks or social distancing unless the unvaccinated person is at high risk for COVID complications. Fully vaccinated people will still need to continue to wear masks, practice social distancing and adhere to other prevention measures in public, and get a Covid test if experiencing Covid-19 symptoms. We encourage everyone to get vaccinated when it is their turn. Everyone has worked hard up to this point, please continue to help us get to the other side of this virus.”, Roanya Rice, Public Health Director of NCDHD.*

\*Numbers are reported by zip code which may cause some number movement between counties.

\*Some data in this report has been reconciled with the State of Kentucky’s death report review.

For additional information please contact Tony Millet at (502) 221-1795 or [www.ncdhd.com](http://www.ncdhd.com)



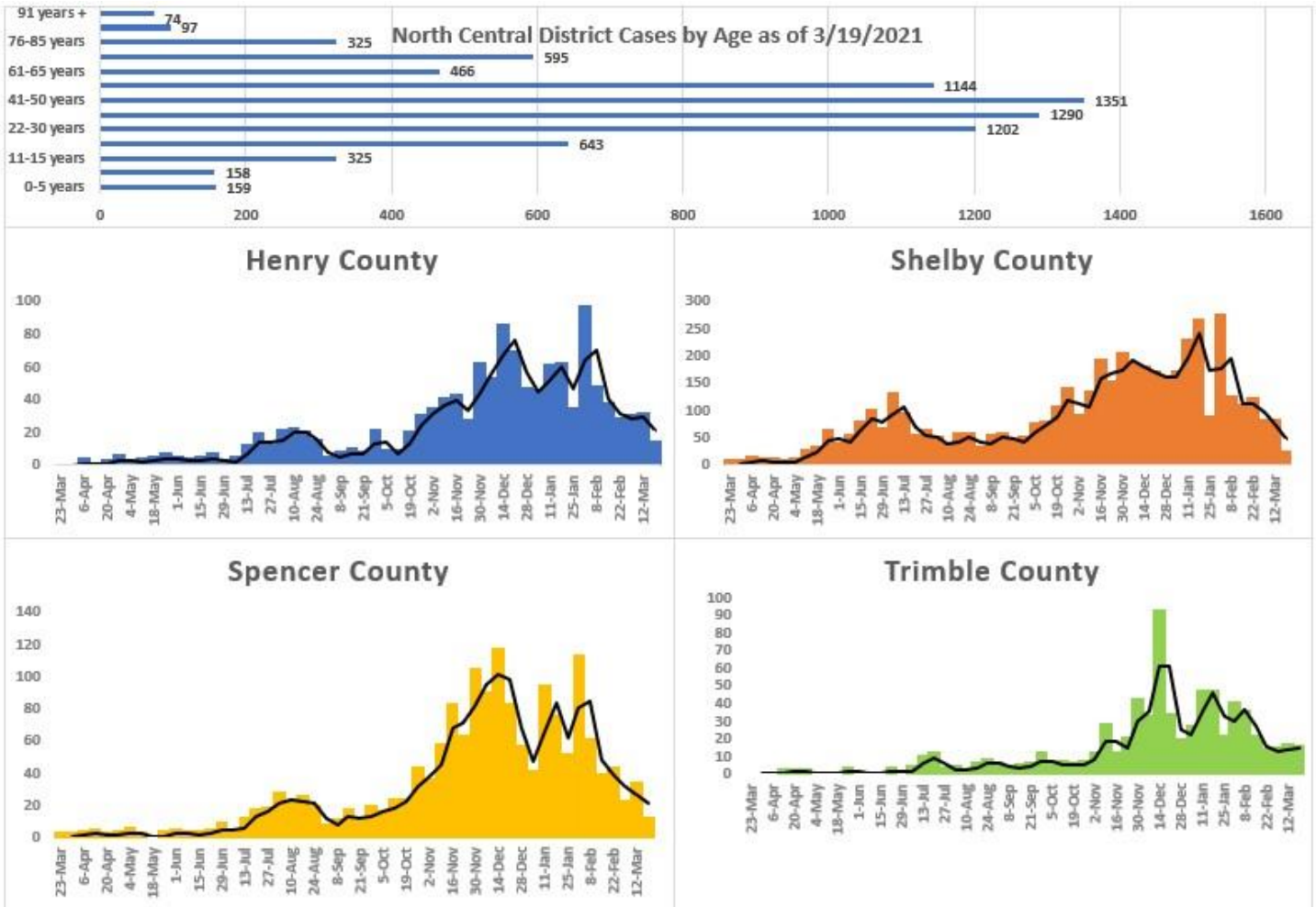
# North Central District Health Department

Protecting Henry, Shelby, Spencer, and Trimble Counties

1020 Henry Clay Street, Shelbyville, KY 40065

(502) 633-1243

[www.ncdhd.com](http://www.ncdhd.com)



###