



# North Central District Health Department

Protecting Henry, Shelby, Spencer, and Trimble Counties  
1020 Henry Clay Street, Shelbyville, KY 40065  
(502) 633-1243 [www.ncdhd.com](http://www.ncdhd.com)

For Immediate release

November 16, 2020

Contact: Tony Millet R.S, Environmental Supervisor/Public Information Officer

Tel: (502) 221-1795 | [tonyl.millet@ky.gov](mailto:tonyl.millet@ky.gov)

**North Central District Health Department is reporting one hundred four new lab-confirmed cases in Shelby, Henry, Trimble, and Spencer Counties, increasing the district case count to 2901. One hundred-sixty-nine individuals monitored by North Central District have been released from isolation.**

**Shelby County, KY** –North Central District Health Department has one hundred four cases that tested positive for the Novel Coronavirus (COVID-19).

- **Shelby County = 62**
  - 15 adult Caucasian females in self-isolation at home.
  - 12 adult Caucasian males in self-isolation at home.
  - 1 elderly Caucasian female under medical care.
  - 7 elderly Caucasian females in self-isolation at home.
  - 5 elderly Caucasian males in self-isolation at home.
  - 3 pediatric Caucasian females in self-isolation at home.
  - 8 pediatric Caucasian males in self-isolation at home.
  - 4 adult Hispanic females in self-isolation at home.
  - 4 adult Hispanic males in self-isolation at home.
  - 1 pediatric Hispanic female in self-isolation at home.
  - 2 adult African American females in self-isolation at home.
- **Henry County= 15**
  - 3 adult Caucasian males in self-isolation at home.
  - 8 adult Caucasian females in self-isolation at home.
  - 1 elderly Caucasian females under medical care.
  - 1 pediatric Caucasian female in self-isolation at home.
  - 1 adult Hispanic female in self-isolation at home.
  - 1 adult African American male in self-isolation at home.
- **Spencer County= 23**
  - 9 adult Caucasian females in self-isolation at home.
  - 7 adult Caucasian males in self-isolation at home.
  - 1 elderly Caucasian male in self-isolation at home.
  - 2 elderly Caucasian females in self-isolation at home.
  - 1 elderly Caucasian female under medical care.
  - 1 pediatric Caucasian female in self-isolation at home.
  - 2 pediatric Caucasian males in self-isolation at home.



# North Central District Health Department

Protecting Henry, Shelby, Spencer, and Trimble Counties  
 1020 Henry Clay Street, Shelbyville, KY 40065  
 (502) 633-1243 [www.ncdhd.com](http://www.ncdhd.com)

- **Trimble County= 4**
  - 1 adult Caucasian female in self-isolation at home.
  - 2 adult Caucasian males in self-isolation at home.
  - 1 pediatric Caucasian female in self-isolation at home.

North Central District released one hundred-sixty-nine individuals from isolation; ninety-two from Shelby County, fifty-six from Spencer County, six from Trimble County, and fifteen from Henry County monitored their symptoms and complied with a self-isolation agreement with the Health Department.

*“According to the CDC and the latest scientifically reviewed data, 'cloth face coverings are one of the most powerful weapons we have to slow and stop the spread' of the COVID-19 virus. Also, the personal use of a face covering not only prevents the spread from an individual but protects the individual who is using the face covering.”, said Roanya Rice, Public Health Director of NCDHD.*

North Central District  
 Health Department



**COVID-19 Summary as of 11/16/2020**

**2901**

**Positive Cases**

<b>273</b>	<b>2592</b>	<b>36</b>
Active Cases	Recovered Cases	Deaths

	Henry	Shelby	Spencer	Trimble
Total Cases	363	1907	490	141
Active Cases	43	162	57	11
Released Cases	316	1717	430	129
Deaths	4	28	3	1

Positive test results by ethnicity		
Hispanic	537	18.5%
African American	155	5.3%
Caucasian	2193	75.6%
Asian	11	0.4%
Other	5	0.2%

\*Numbers are reported by zip code which may cause some number movement between counties.

For additional information please contact Tony Millet at (502) 221-1795 or [www.ncdhd.com](http://www.ncdhd.com)



# North Central District Health Department

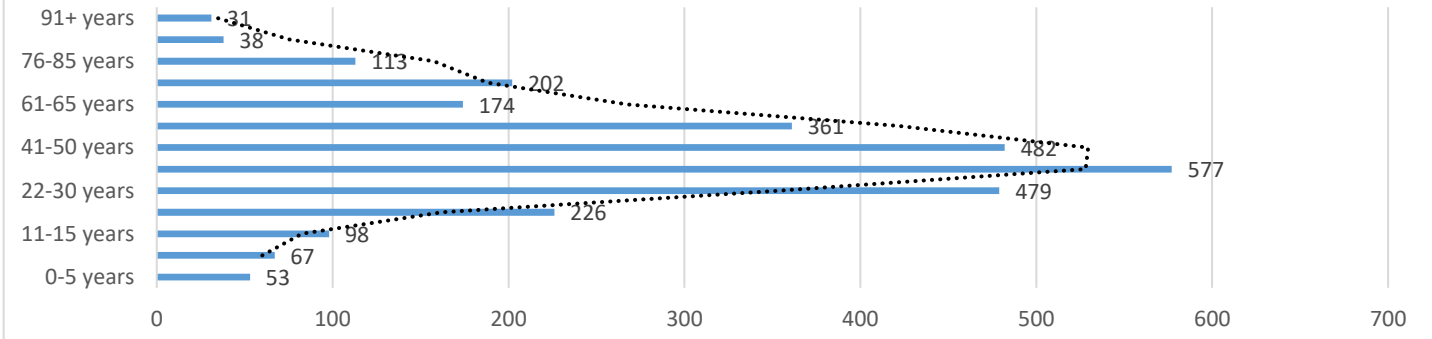
Protecting Henry, Shelby, Spencer, and Trimble Counties

1020 Henry Clay Street, Shelbyville, KY 40065

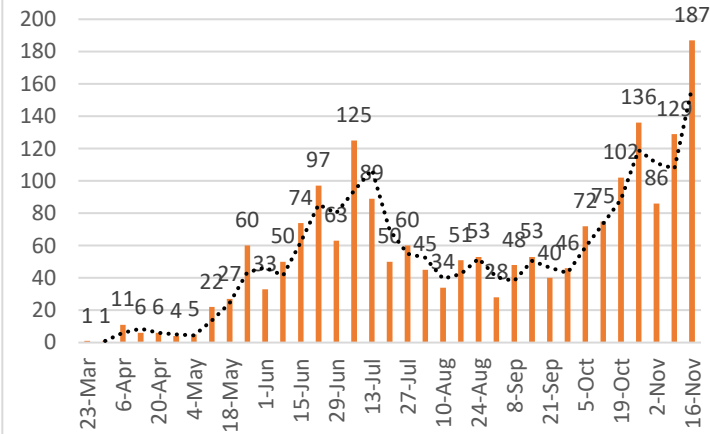
(502) 633-1243

[www.ncdhd.com](http://www.ncdhd.com)

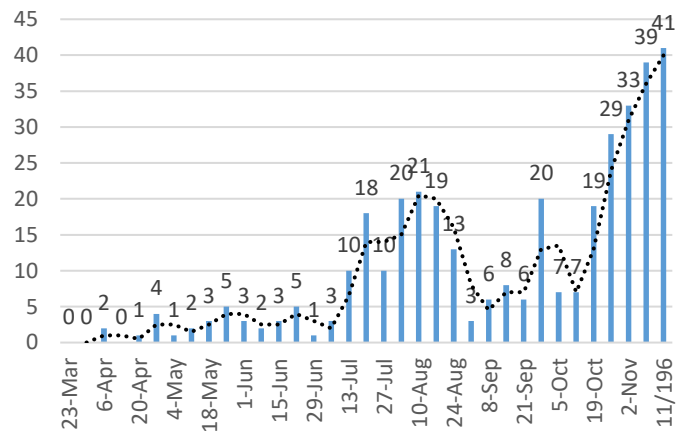
### North Central District Cases by Age as of 11/16/2020



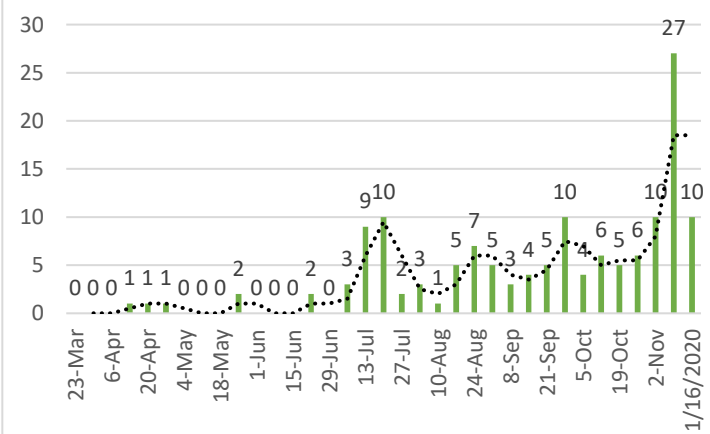
### Shelby County Cases by Week



### Henry County Cases by Week



### Trimble County Cases by Week



### Spencer County Cases by Week

