



North Central District Health Department

Protecting Henry, Shelby, Spencer, and Trimble Counties
1020 Henry Clay Street, Shelbyville, KY 40065
(502) 633-1243 www.ncdhd.com

For Immediate release

November 23, 2020

Contact: Tony Millet R.S, Environmental Supervisor/Public Information Officer

Tel: (502) 221-1795 | tonyl.millet@ky.gov

North Central District Health Department is reporting eighty-six new lab-confirmed cases in Shelby, Henry, Trimble, and Spencer Counties, increasing the district case count to 3156. One hundred-twenty individuals monitored by North Central District have been released from isolation.

Shelby County, KY –North Central District Health Department has eighty-six cases that tested positive for the Novel Coronavirus (COVID-19).

Note: North Central District Health Department will not issue a press release on Friday, November 27, 2020 in observance of Thanksgiving Holiday; the release on Monday, November 30, 2020 will contain the COVID-19 numbers from Thursday thru Sunday.

- **Shelby County = 48**
 - 13 adult Caucasian females in self-isolation at home.
 - 14 adult Caucasian males in self-isolation at home.
 - 8 elderly Caucasian females in self-isolation at home.
 - 2 elderly Caucasian males in self-isolation at home.
 - 1 pediatric Caucasian female in self-isolation at home.
 - 2 pediatric Caucasian males in self-isolation at home.
 - 2 adult Hispanic females in self-isolation at home.
 - 1 adult Hispanic male in self-isolation at home.
 - 1 pediatric Hispanic female in self-isolation at home.
 - 1 pediatric Hispanic male in self-isolation at home.
 - 2 adult African American females in self-isolation at home.
 - 1 adult African American male in self-isolation at home.
- **Henry County= 10**
 - 4 adult Caucasian females in self-isolation at home.
 - 4 adult Caucasian males in self-isolation at home.
 - 1 pediatric Caucasian female in self-isolation at home.
 - 1 adult Hispanic male in self-isolation at home.
- **Spencer County= 20**
 - 12 adult Caucasian females in self-isolation at home.
 - 3 adult Caucasian males in self-isolation at home.
 - 1 elderly Caucasian male in self-isolation at home.
 - 1 elderly Caucasian female in self-isolation at home.
 - 1 elderly Caucasian male under medical care.
 - 2 pediatric Caucasian females in self-isolation at home.



North Central District Health Department

Protecting Henry, Shelby, Spencer, and Trimble Counties
 1020 Henry Clay Street, Shelbyville, KY 40065
 (502) 633-1243 www.ncdhd.com

- **Trimble County= 8**
 - 4 adult Caucasian females in self-isolation at home.
 - 1 adult Caucasian male in self-isolation at home.
 - 1 elderly Caucasian female in self-isolation at home.
 - 2 elderly Caucasian males in self-isolation at home.

North Central District released one hundred-twenty individuals from isolation; eighty-two from Shelby County, twenty-one from Spencer County, three from Trimble County, and fourteen from Henry County monitored their symptoms and complied with a self-isolation agreement with the Health Department.

“The health department is projecting exponential growth of COVID-19 cases during this holiday season. By following the CDC guidelines and Governor Beshear’s recommendations, by correctly wearing a face covering, washing hands frequently, and maintaining social distance, we as a community can help reduce the spread and decrease potential harm to our friends and families.”, said Roanya Rice, Public Health Director of NCDHD.

North Central District
 Health Department



COVID-19 Summary as of 11/23/2020

3156

Positive Cases

275	2843	38
Active Cases	Recovered Cases	Deaths

	Henry	Shelby	Spencer	Trimble
Total Cases	389	2056	551	160
Active Cases	36	150	70	19
Released Cases	348	1877	478	140
Deaths	5	29	3	1

Positive test results by ethnicity		
Hispanic	556	17.6%
African American	167	5.3%
Caucasian	2416	76.6%
Asian	12	0.4%
Other	5	0.2%

*Numbers are reported by zip code which may cause some number movement between counties.

For additional information please contact Tony Millet at (502) 221-1795 or www.ncdhd.com



North Central District Health Department

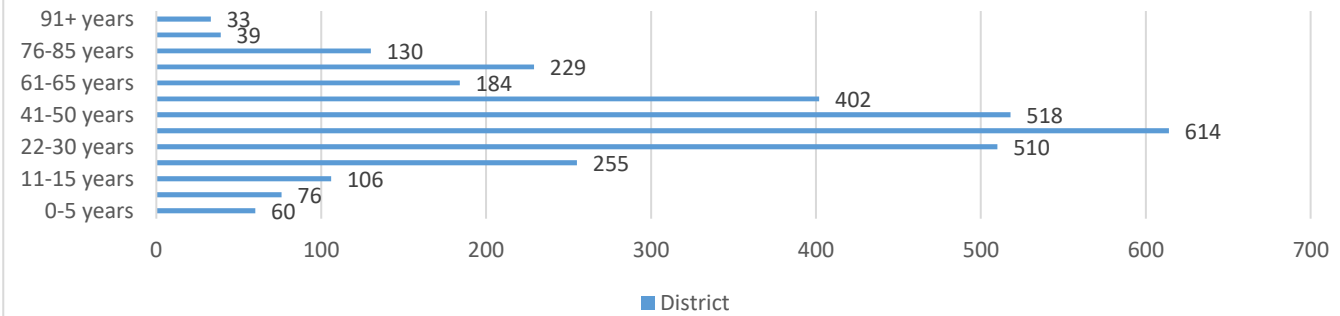
Protecting Henry, Shelby, Spencer, and Trimble Counties

1020 Henry Clay Street, Shelbyville, KY 40065

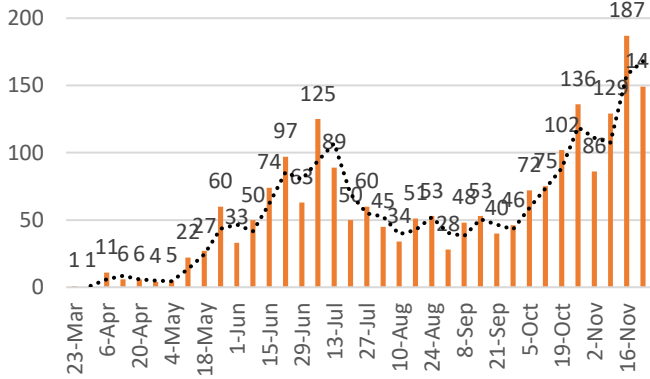
(502) 633-1243

www.ncdhd.com

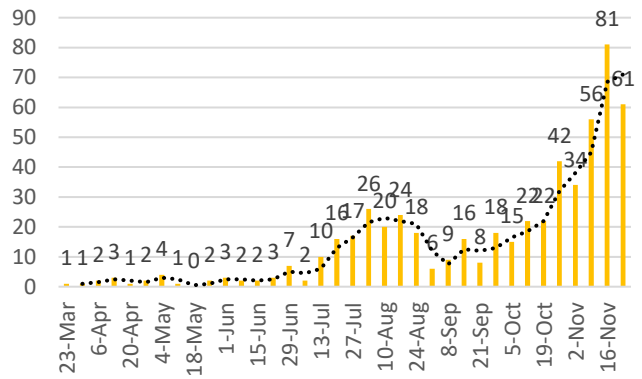
North Central District Cases by Age as of 11/23/2020



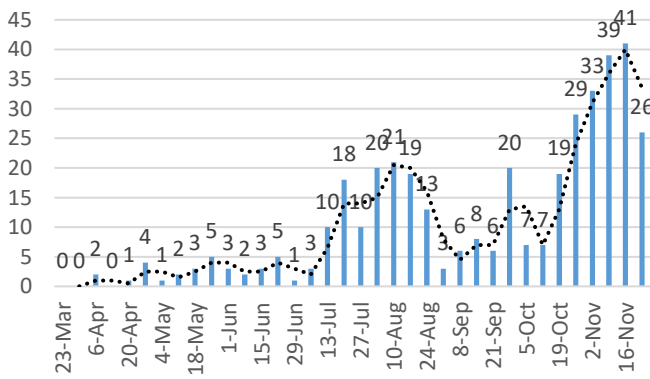
Shelby County Cases by Week



Spencer County Cases by Week



Henry County Cases by Week



Trimble County Cases by Week

